

Using a Linksys wireless router in your own personal room

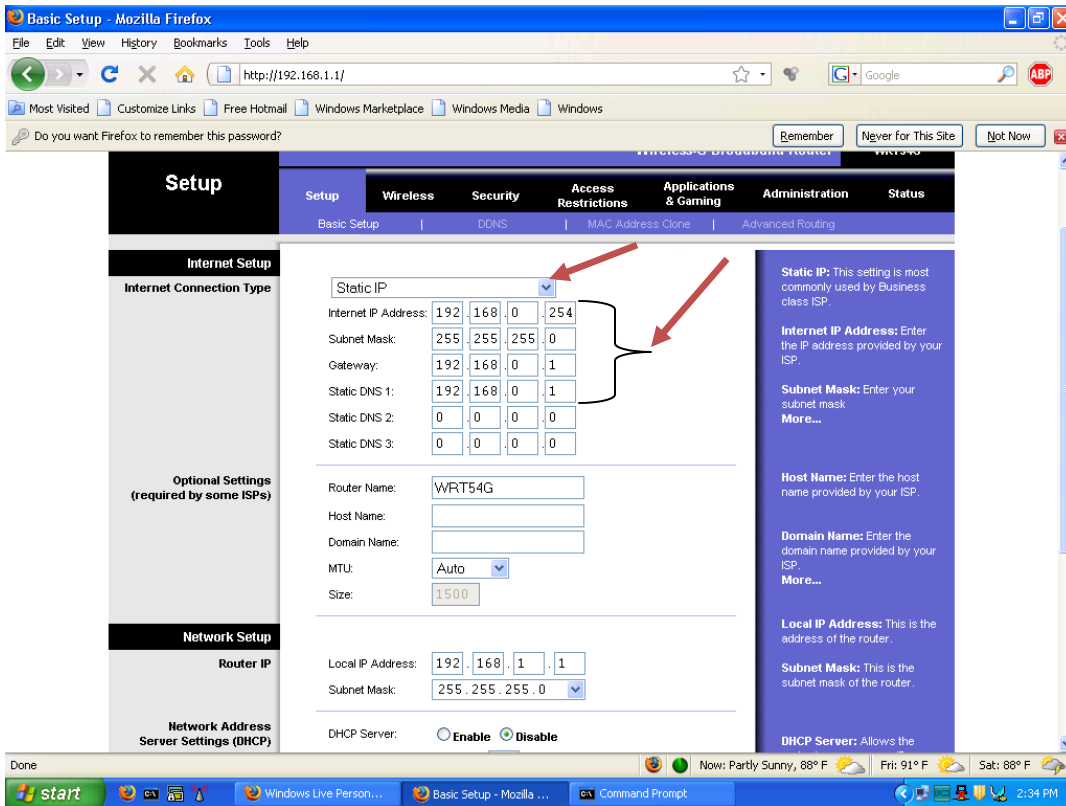
- 1:** Plug the feeder cable into port 1 on the back of the router and plug another cable into ports 2-4 with cables other end going to your computer. **DO NOT** plug either cable into the router, wlan, or uplink ports.



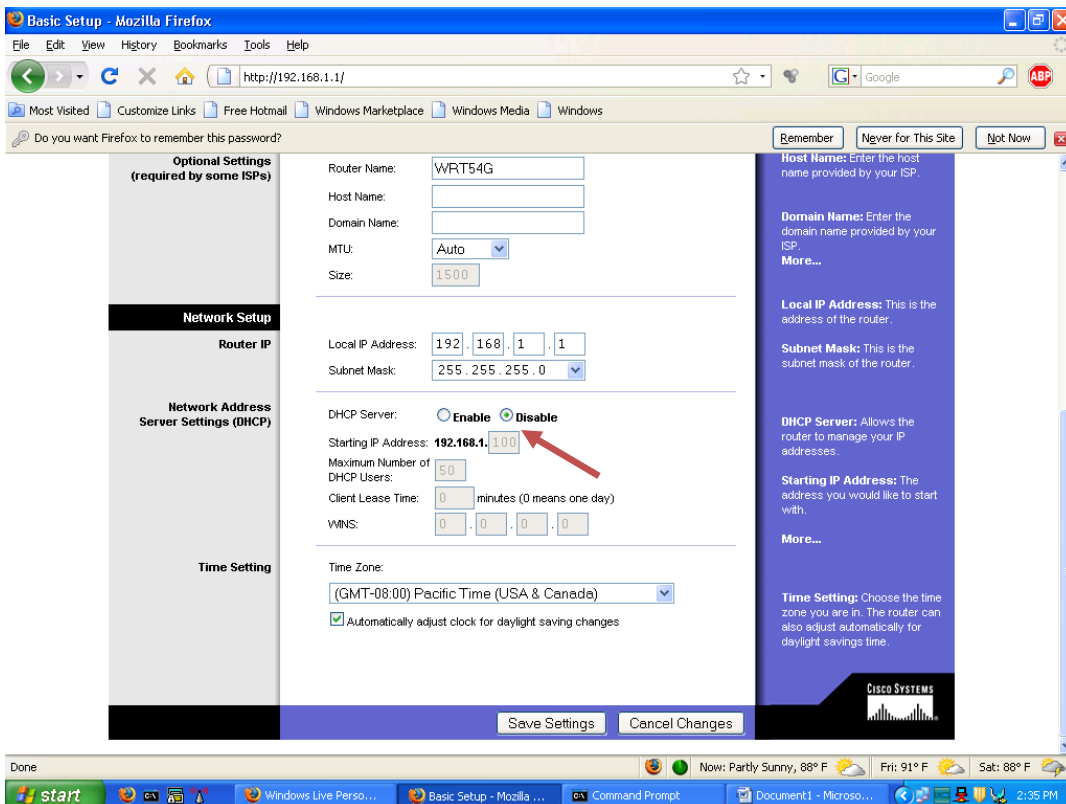
- 2:** Type "192.168.1.1" into your web browser. Enter "admin" as both the username and password to access the routers setup program.
- 3:** Change the internet connection type to "Static IP" from the drop down menu.
- 4:** Enter the following information;

Internet IP Address : **192 160 0 254**
Subnet Mask: **255 255 255 0**
Gateway: **192 160 0 1**
Static DNS 1: **192 160 0 1**

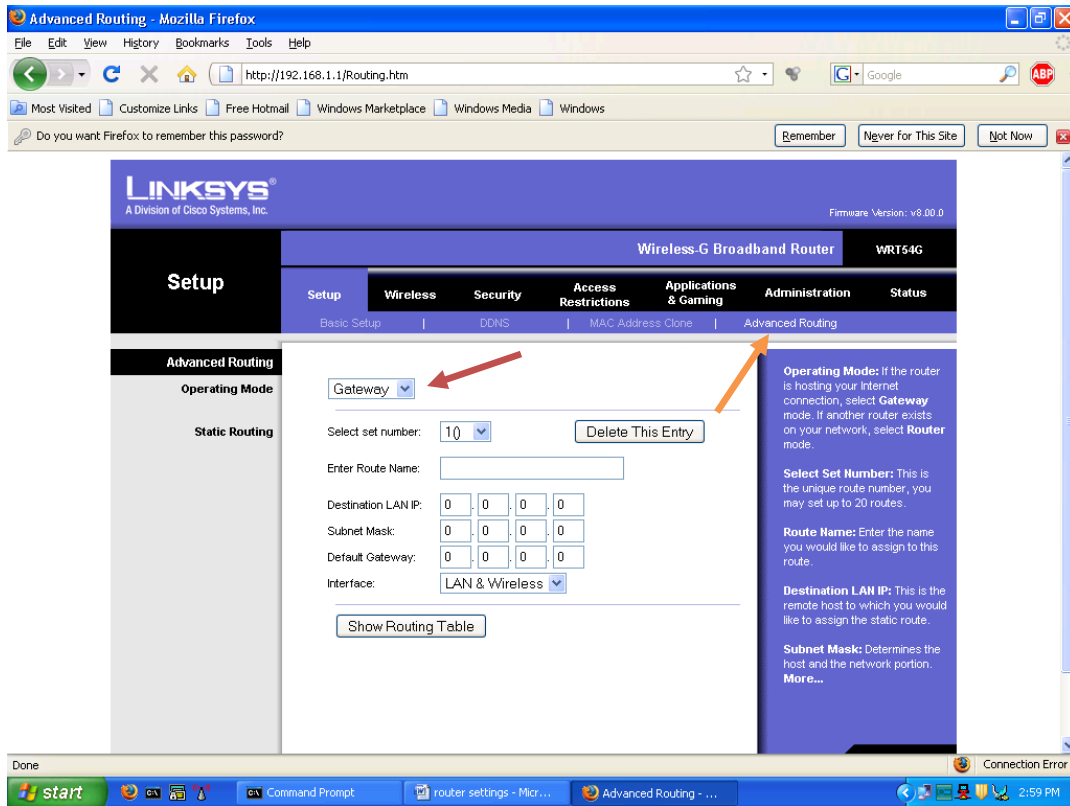
Upon making the changes from steps 2 and 3 your screen should look similar to that of the following picture.



5: Towards the bottom of the page where it says “DHCP Server:” change the setting from “Enable” to “Disable” as shown on the following picture.



6: On the top of the setup page click on “**Advanced Routing**” tab. On the new screen, ensure “**Gateway**” is selected from the drop down menu. The screen should look as it does in the following picture.



7: Save the setting that you just made on the router. The save button is located at the bottom of the setup page.

8: Restart your computer.

At this point, your wireless router should be configured to allow access to the internet for multiple computers along with providing a wireless network. NOTE: you will still need to have Cisco Clean Access Agent running on all computers connecting through your router and any video game systems will need to have their MAC address's registered before they can connect to the internet. For assistance with Cisco Clean Access Agent or registering a MAC address, please call the IT Help Desk at x1111 or email the It Help Desk at help-desk@onu.edu